

Richard wakes up every morning ten minutes before Eithne and Célia. He makes a coffee and prepares a nice breakfast with toast, butter and honey. Eithne has a beekeeping and Célia really loves when dad brings her to collect the honey.

The house where they live is entirely designed and built by Richard; it is located in a vast plain in the center of a ring of mountains in the north of England. The carrier structure is made of water crystals and spores: in parallel to the respective musical careers, while Eithne deepens her interest in the psychology of the plants (a research which is now evolving thanks to the help of Célia), Richard decided to continue composing music by freezing it in the form of architecture, following a tradition which, from Hinduism to Pythagora and Goethe, had already guessed and argued that “the geometry of the forms is solidified music.”

Aphex Twin - Flim [3D mix]*



Full Rendering



Internal microstructure

Aphex Twin - Windowlicker [3D mix]*

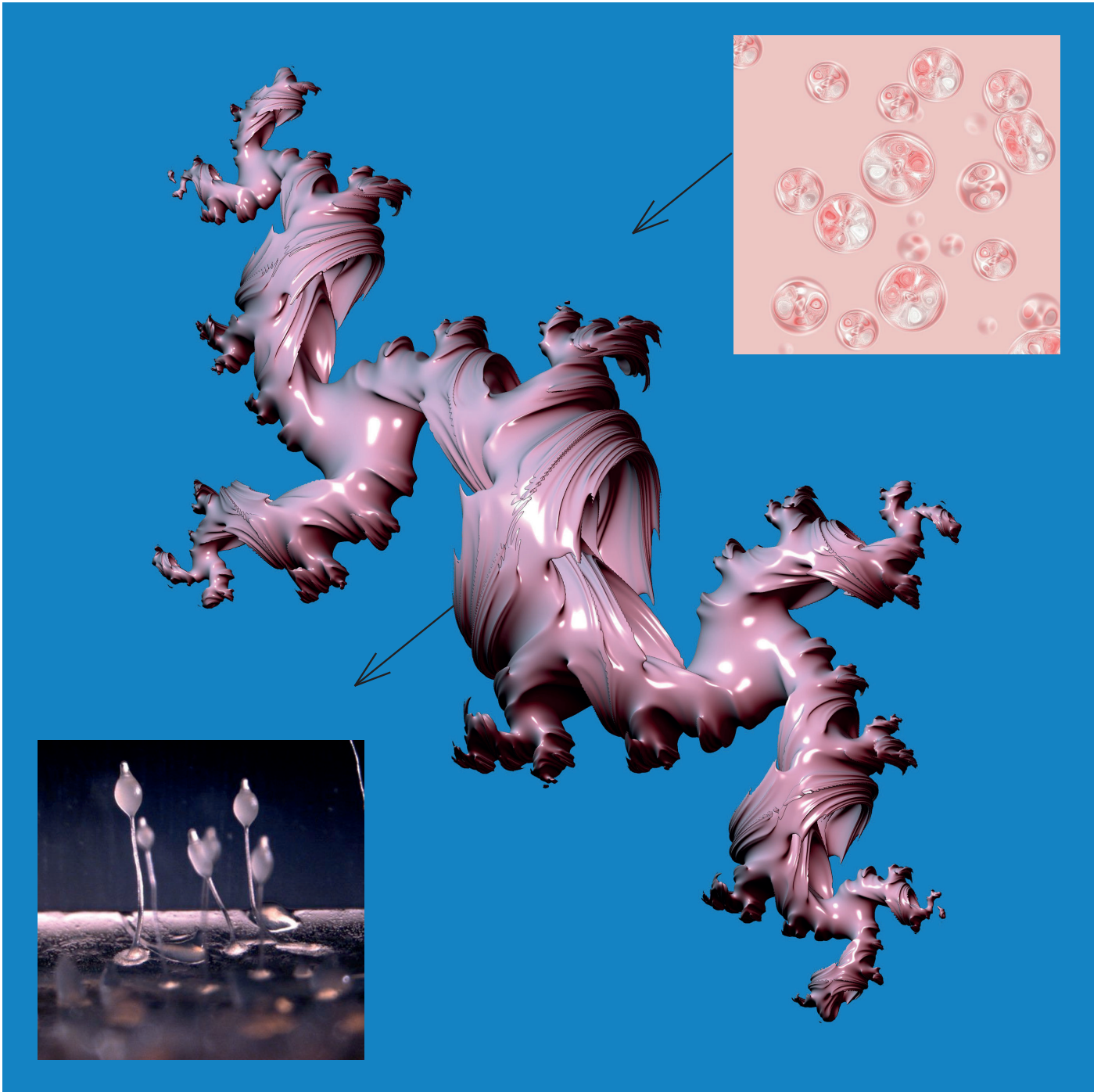


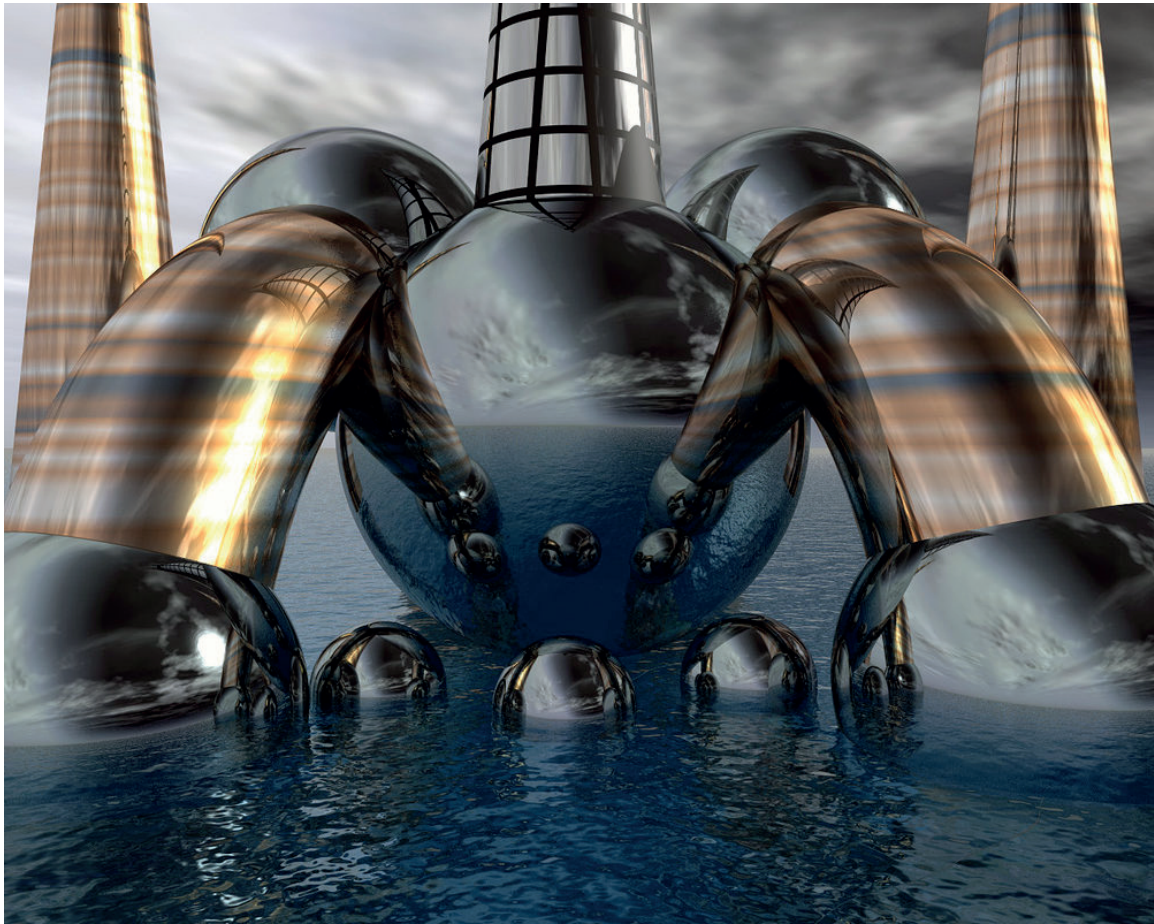
Rendering



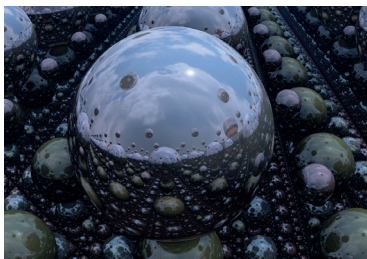
Computer Magnification of the chemical structure

Molecular structure of the biochemical compound for 3D printers.

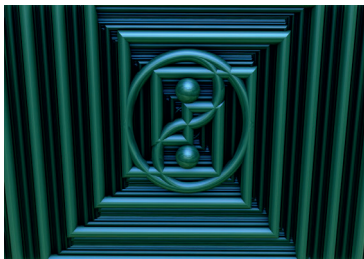




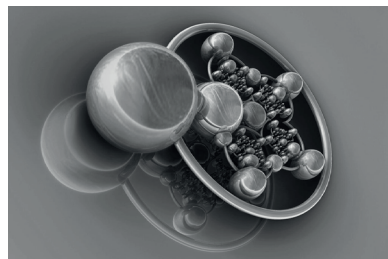
Outdoor rendering



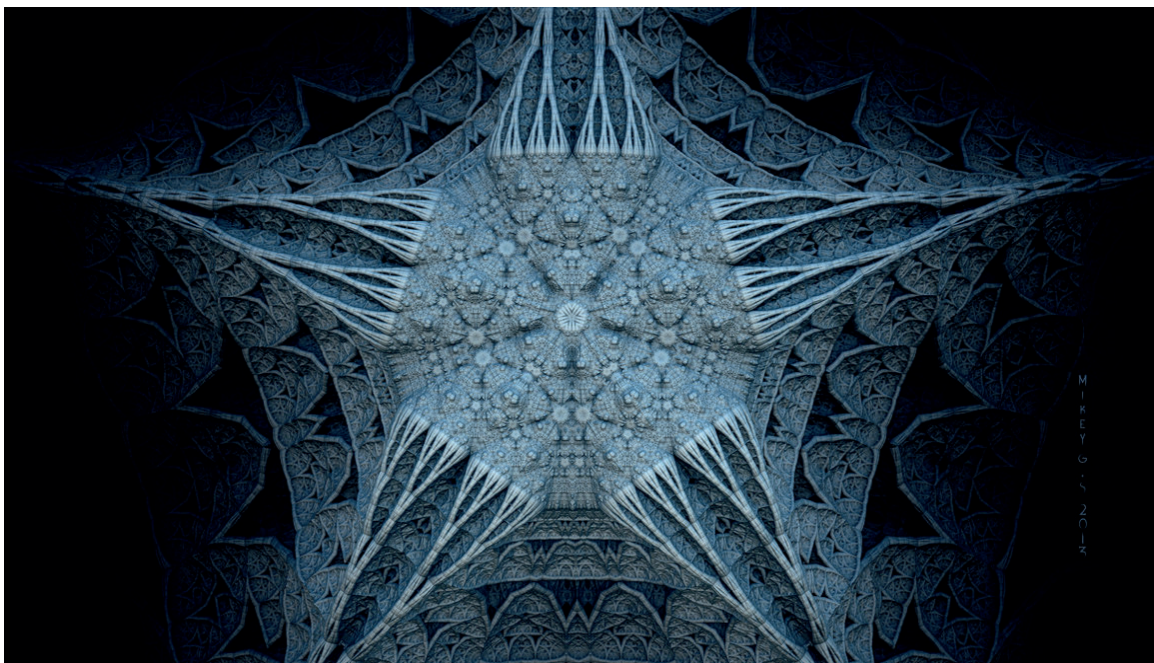
Interior Design



Entrance Door



Sofa bed

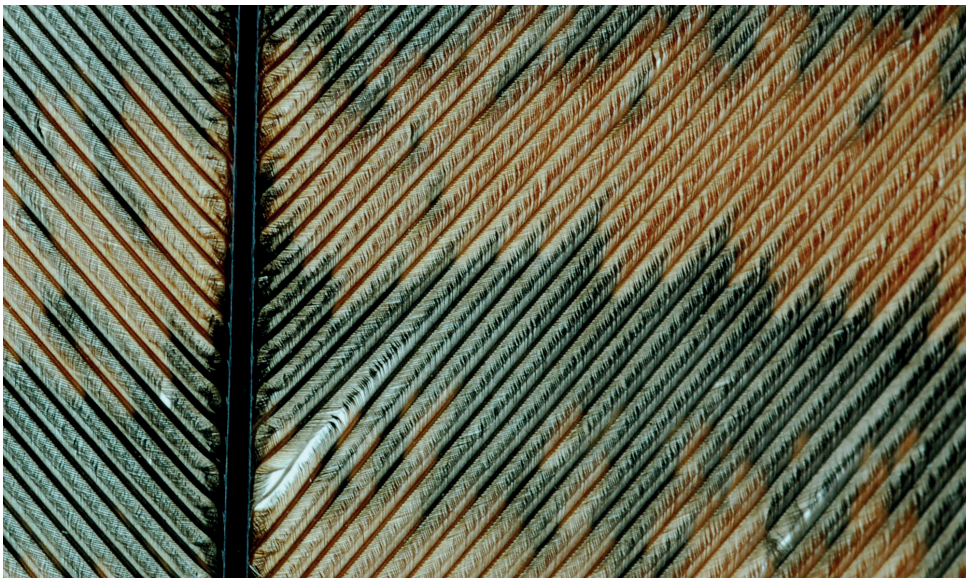


1200x magnification of the outer spherical surface

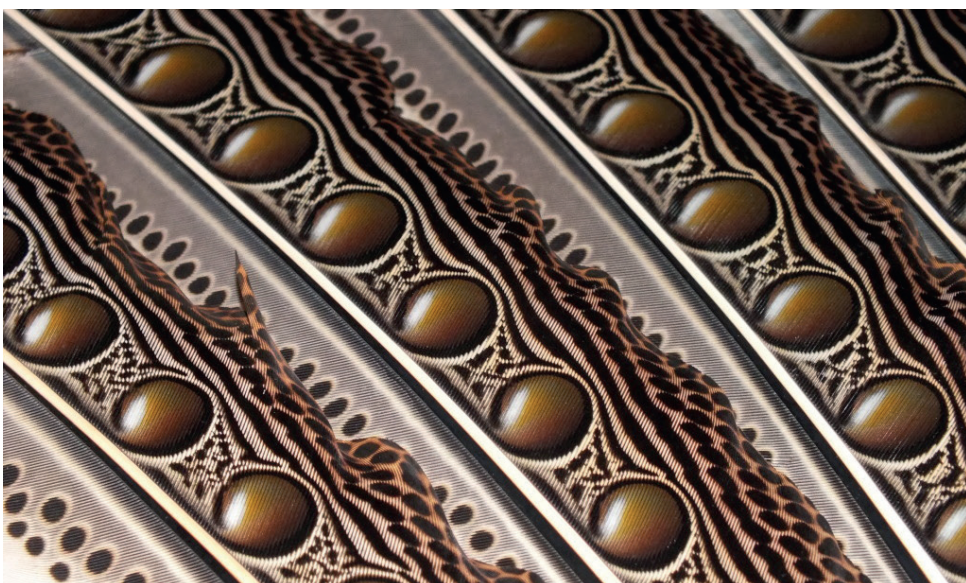
Molecular structure



1200x



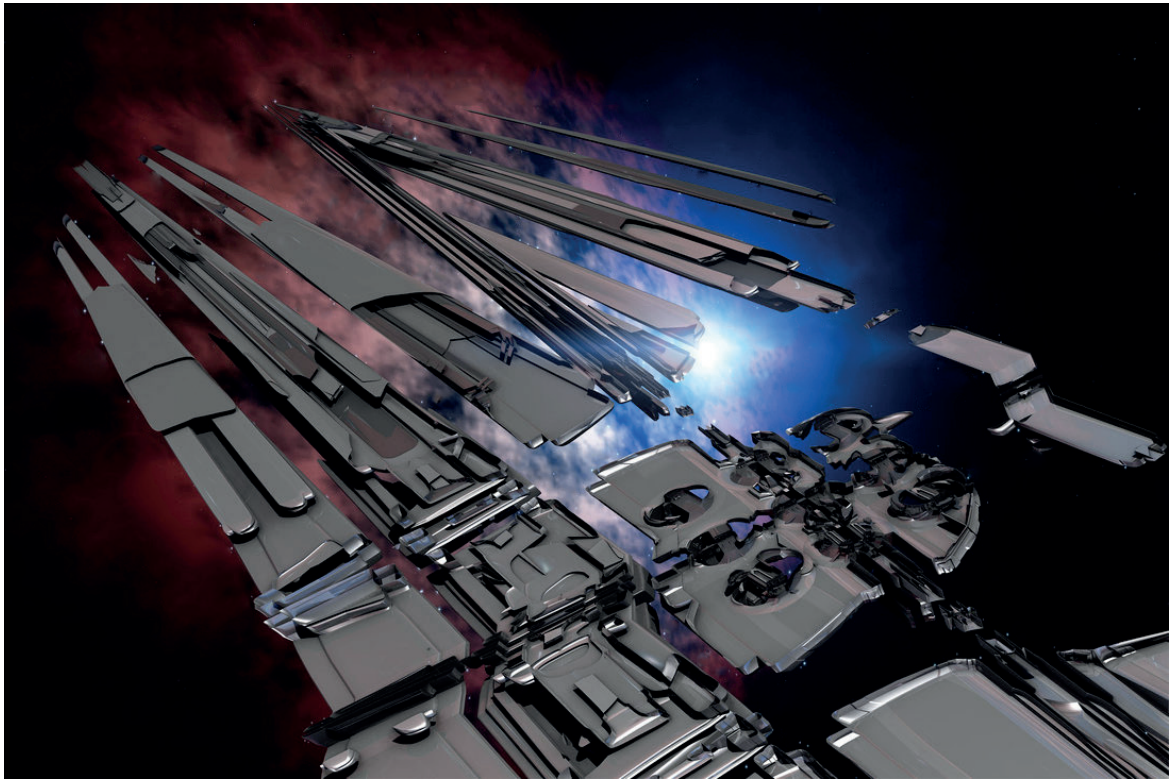
20x



1:1

Aphex Twin - Stone in Focus [3D Mix]*

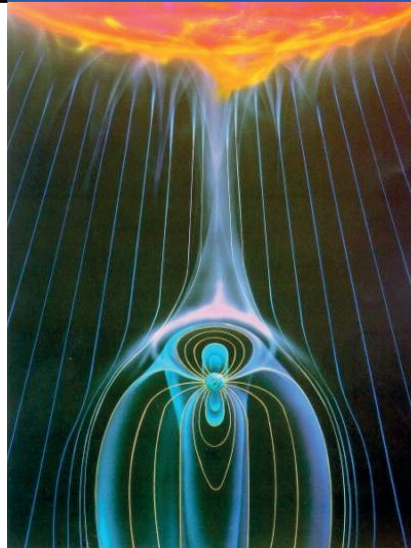
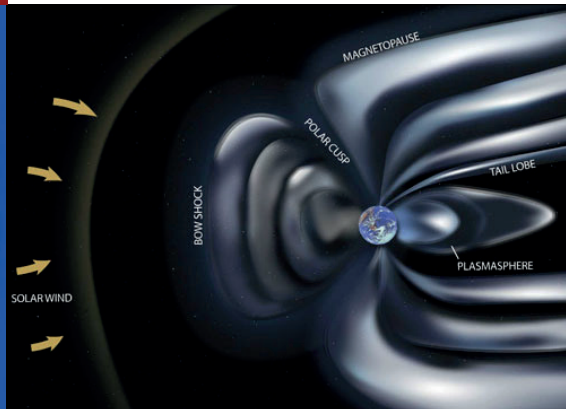
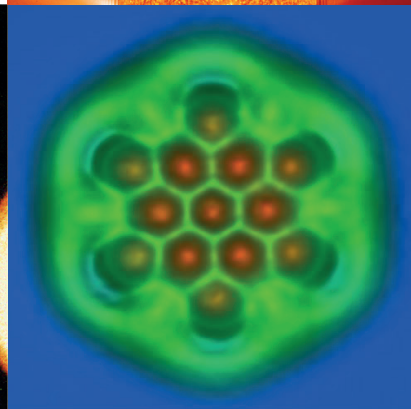
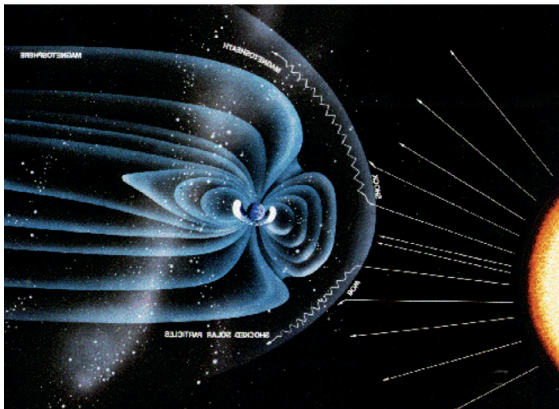
1:1



1200 x



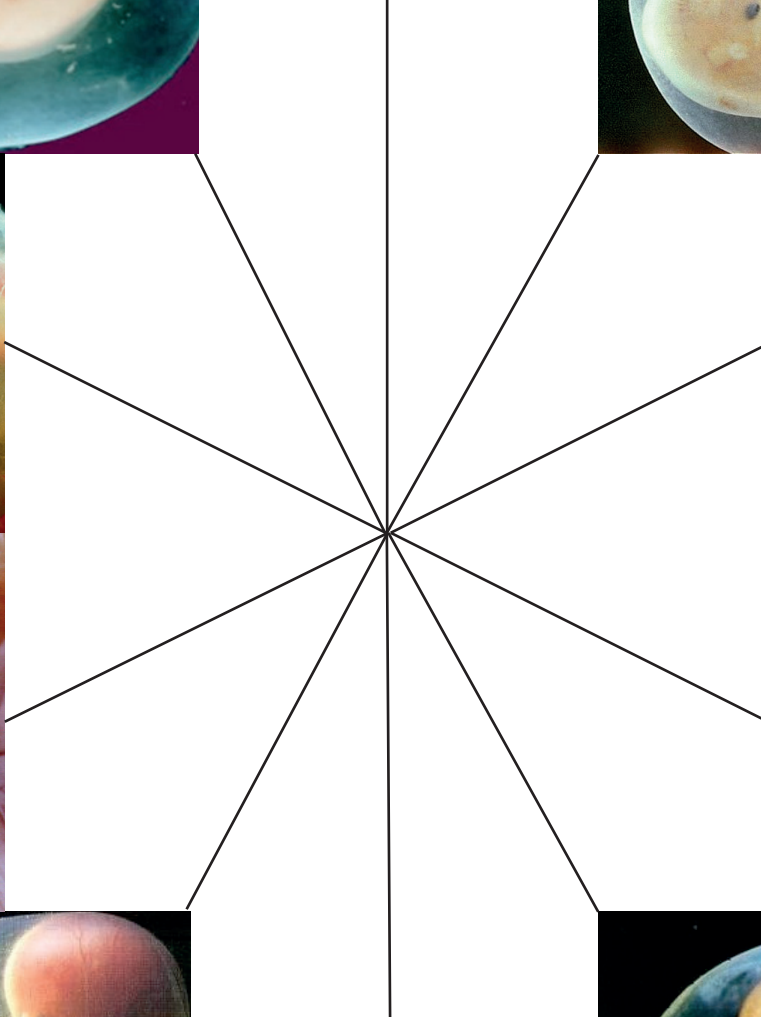
The interlude ends with the solar wind that comes into contact with the Earth's magnetic field.



The solar wind is composed of plasma and its chemical composition is identical to that of the crown : 73% hydrogen and 25 % helium, with the remaining 2% formed from trace elements. Near the Earth, the solar wind speed varies between 200 and 900 km/s (average 450 km/s).

Bellydancefloor music





The talisman city

